



# FY24 AGM ANNUAL RESULTS PRESENTATION

FASTER | CHEAPER | SUSTAINABLE | FLEXIBLE

# DISCLAIMER

This presentation does not constitute investment advice. Neither this presentation nor the information contained in it constitutes an offer, invitation, solicitation or recommendation in relation to the purchase or sale of shares in any jurisdiction. This presentation does not take into account any person's particular investment objectives, financial resources or other relevant circumstances and the opinions and recommendations in this presentation are not intended to represent recommendations of particular investments to particular persons. All securities transactions involve risks, which include (among others) the risk of adverse or unanticipated market, financial or political developments.

To the fullest extent permitted by law, PARKD Limited (the **Company** or **PARKD**) does not make any representation or warranty, express or implied, as to the accuracy or completeness of any information, statements, opinions, estimates, forecasts or other representations contained in this presentation. No responsibility for any errors or omissions from this presentation arising out of negligence or otherwise is accepted.

This presentation includes forward looking statements. Forward looking statements are only predictions and are subject to risks, uncertainties and assumptions which are outside the control of PARKD. These risks, uncertainties and assumptions including competition risk, currency fluctuations, economic and financial market conditions, environmental risks and legislative, fiscal or regulatory developments, political risks, project delay or advancement, approvals and cost estimates. Actual values, results or events may be materially different to those expressed or implied in this presentation. Given these uncertainties, readers are cautioned not to place reliance on forward looking statements. Any forward looking statements in this presentation speak only at the date of issue of this presentation. Subject to any continuing obligations under applicable law and the ASX Listing Rules, PARKD does not undertake any obligation to update or revise any information or any of the forward looking statements in this presentation or any changes in events, conditions or circumstances on which any such forward looking statement is based.



# HIGHLIGHTS

FASTER | CHEAPER | SUSTAINABLE | FLEXIBLE

# FY24 FINANCIAL HIGHLIGHTS

**FY24 Revenue +190% to A\$3.33 million (FY23: A\$1.15 million).**

**Driven by:**

- increased construction and technical advisory services for multiple new clients across various sectors;
- Delivery of construction works for Quattro Automotive (a three-storey Audi dealership in Perth, WA).
- Completion of stage 1 construction documentation works, and commencement of stage 2 construction works for John Hughes Group (a multi-level car storage facility in Perth, WA)

During the 2H of FY 24 PARKD saw the **increase in technical design & advisory across a broader range of new clients not historically seen**, illustrating the versatility of the technology and providing a strong pipeline for FY25.

**Operating loss reduced to A\$0.29 million in FY24**, an improvement on the FY23 loss of \$0.53 million.

This reflects PARKD's increased revenue from the above activities and **prudent capital management** measures as we **focus on executing our project pipeline**.

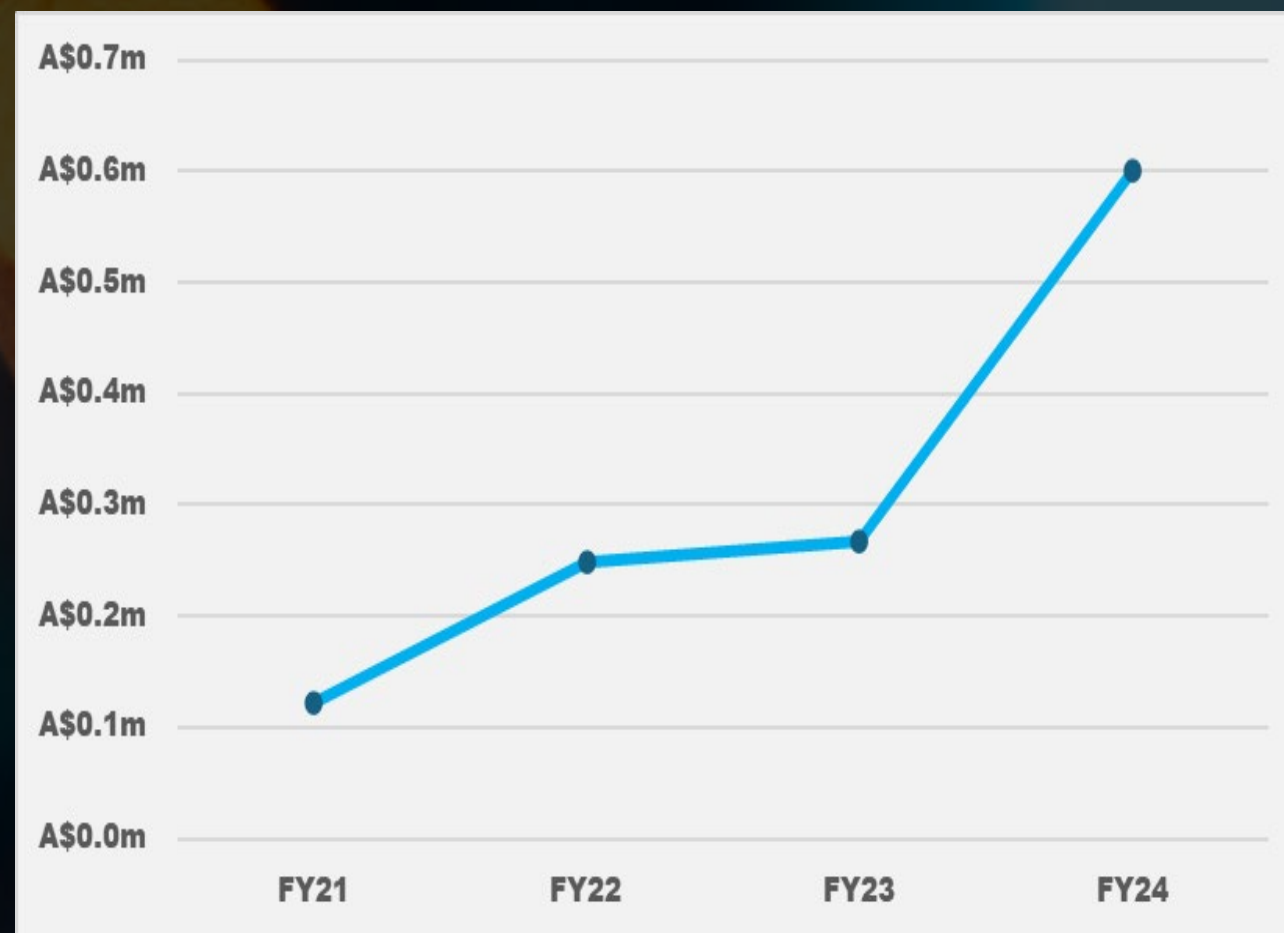
# FY24 FINANCIAL HIGHLIGHTS

## Gross Revenue (FY21 - FY24)



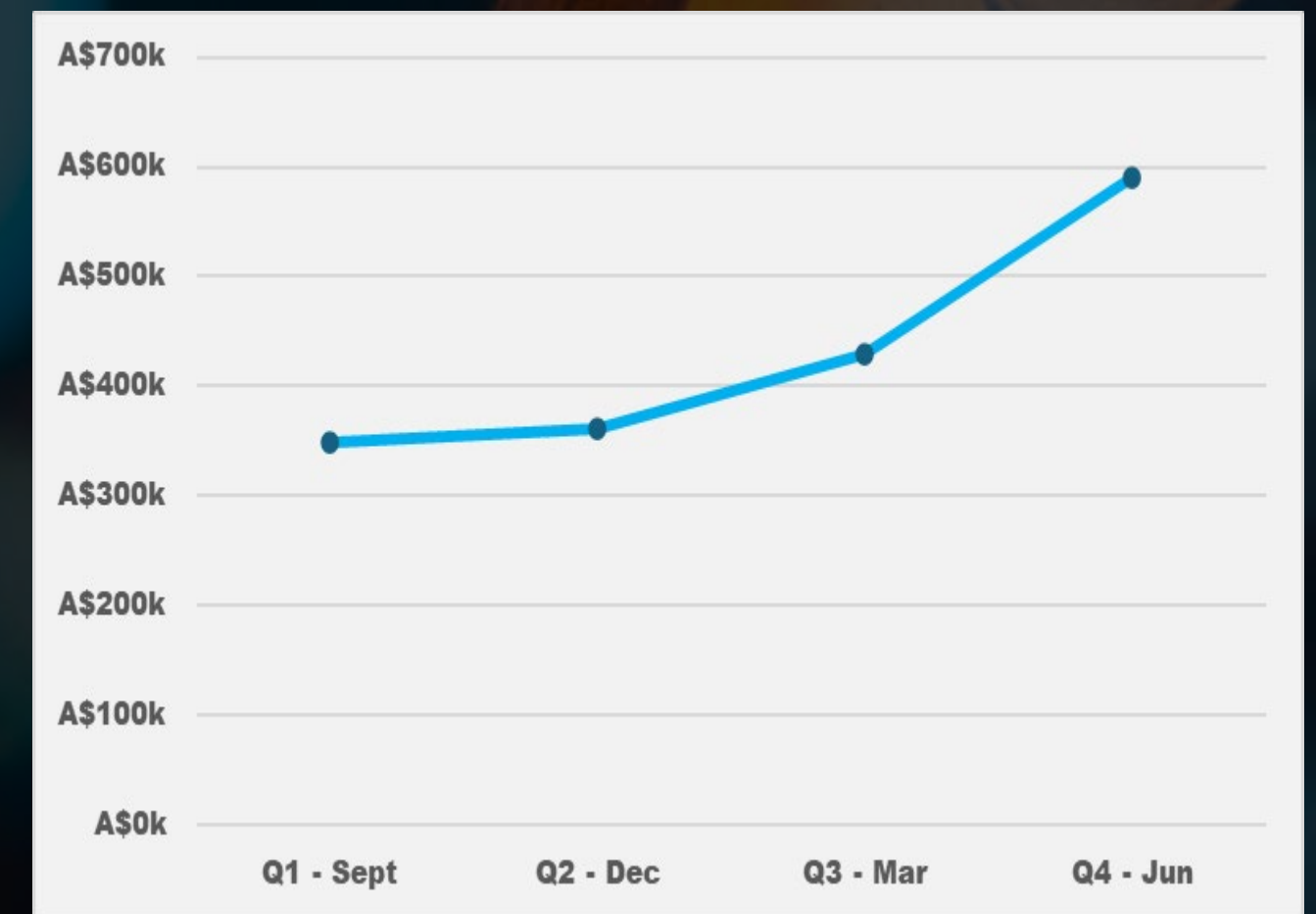
- FY24 Revenue of A\$3.33 million.
- +190% YoY

## Technical Works Revenue (FY21 - FY24)



- FY24 technical works revenue of A\$601k.
- +125% YoY

## FY24 Cash Position



- FY24 Cash A\$591k as at 30 June 2024
- +47% YoY

# FY24 OPERATIONAL HIGHLIGHTS

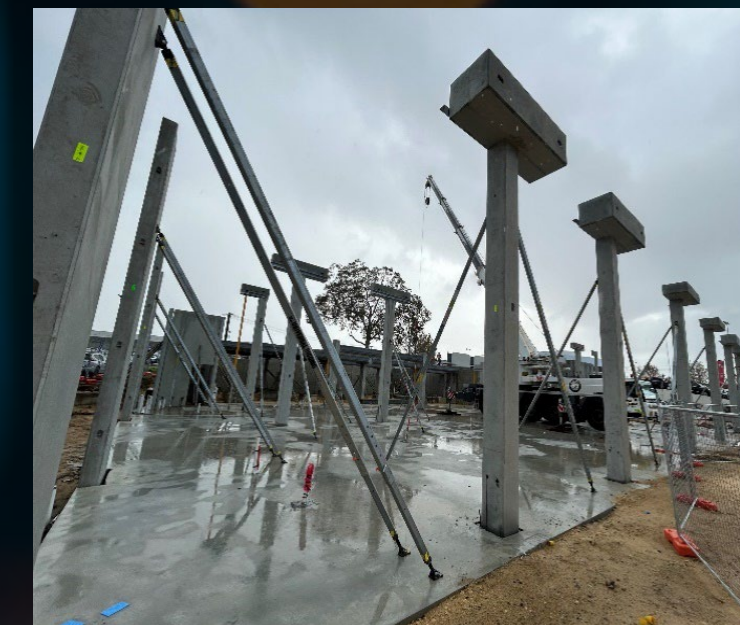
## 2 Construction Projects underway in FY24.

**Quattro Automotive Project** (a three-storey Audi dealership in Perth, WA):

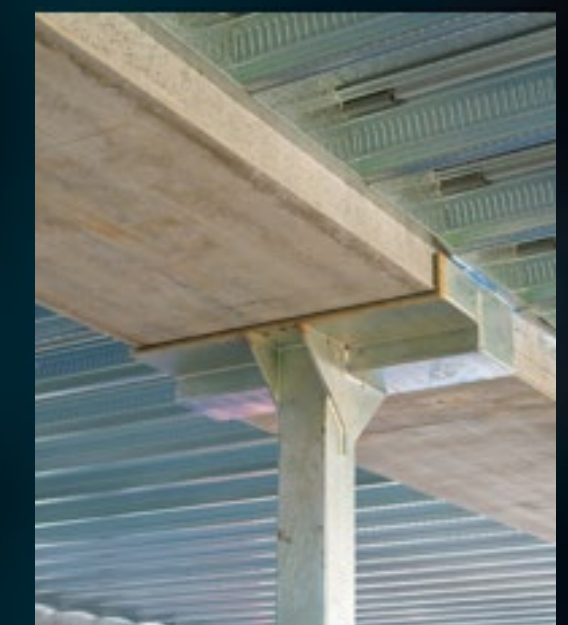
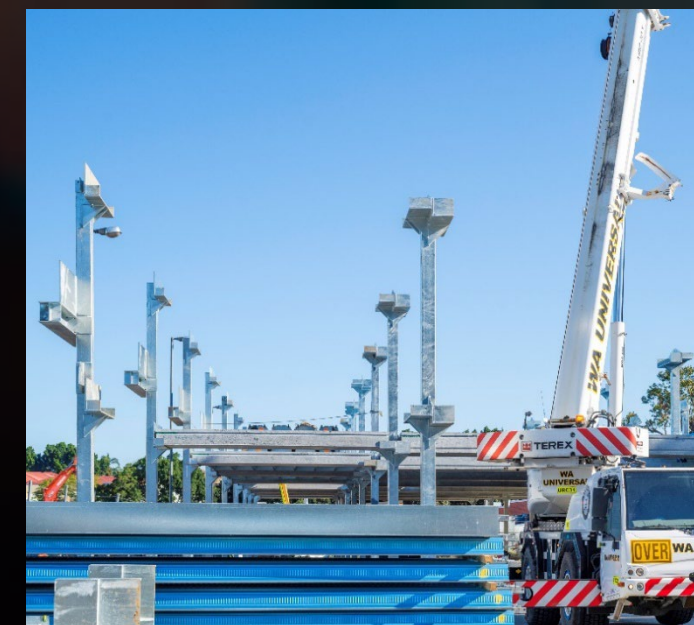
- Stage 2 construction is underway for a luxury retail centre for Audi Centre Perth
- The construction showcases PARKD's **Metal Deck Connection System** throughout.
- **Substantial completion in Q2 FY25**

**John Hughes Forward Street Project** (Perth, WA):

- Stage 1 has been completed, and stage two of a three-storey car park and storage facility is underway.
- Assembly of the superstructure commenced in Q1 FY25 and planned for **substantial completion in Q2 FY25**.



Quattro Automotive Project installation and assembly in Perth, WA



Forward Street Project installation and assembly in Perth, WA

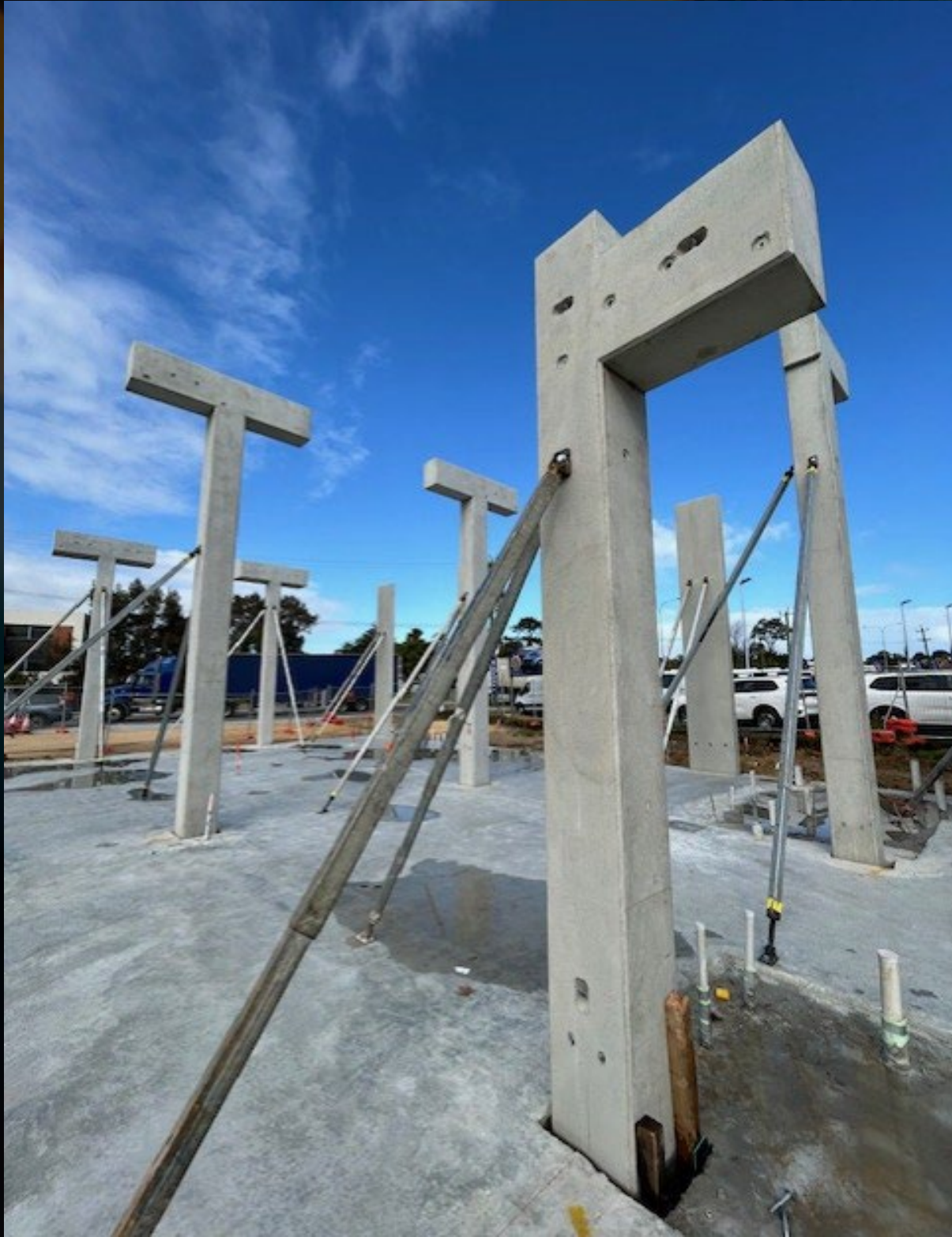
# PROJECT IMAGES



Columns installed at 6m in height



Slimdek prefabricated modules awaiting install



Precast columns and headstocks awaiting CVB install



Slimdek module installation utilising the MDSB lifting bar



Long spanning CVB supporting Slimdek modules with the MDSB



PARKD System underside finish

**FASTER | CHEAPER | SUSTAINABLE | FLEXIBLE**

# FY24 OPERATIONAL HIGHLIGHTS

## Increase in Technical Advisory.

PARKD experience significant growth in its technical advisory and consulting service. **FY24 fee incomes totalled over A\$0.6 million.**

This was from wider range of new and existing clients, and various new sectors and primary industries.

Customers, included (but not limited to):

- Southern Health Services WA
- Hellenic Club Canberra
- Woolworths Group Ltd
- Sydney Airport Corporation
- Perth Airport Authority
- St John Ambulance WA, and
- Mineral Resources Ltd.

Creating a strong project pipeline of additional technical advisory and construction projects for FY25.

## Establishment of Prefabrication Facility.

In 2H FY24 PARKD established a prefabrication facility to produce the **Slimdek** and **Metal Deck Support system modules** for the proof-of-concept projects.

These works provide valuable information to support the development of prefabrication methods and will remain in use for FY25 to support PARKDs project pipeline delivery.



Prefabrication Facility in Perth, WA



# FY24 BUSINESS HIGHLIGHTS

## Licencing and Exclusive Agreement with Fielders

In January 2024, PARKD executed **Binding License Terms with Fielders Steel Roofing, a subsidiary of BlueScope Steel Limited**, for the licensing of PARKD's Metal Deck Support System IP in Australia.

Fielders completed due diligence on licencing rights, royalties, supply cost, regional territory, competition and performance to finalise binding terms on which an agreement will be based subject to satisfactory performance and proof-of-concept of the **Quattro Automotive Project** and **John Hughes Forward Street Project**.

**Scheduled for Q3 FY25**

## Expanding IP Patent Portfolio

### Metal Deck Support System

**PARKD has applied to register a patent in Australia and internationally** for its proprietary Metal Deck Support System (**MDSS**). The MDSS allows the modularisation of profiled sheet steel formwork systems (such as Slimdek 210), enabling connection with columns, walls and other vertical support elements.

### Continuously Voided Beam Technology

**PARKD has now registered patents in 13 countries** for its proprietary Continuous Voided Beam technology (**CVB**), a critical component of the PARKD Car Park System. The CVB enables rapid assembly of the primary structure and offers flexibility to relocate the structure if required.



Load Test for PARKD system in Perth, WA



Installed CVB and Slimdek with MDSS in Perth, WA



# PARKD

## OUTLOOK

FASTER | CHEAPER | SUSTAINABLE | FLEXIBLE

# FY25 OUTLOOK

## Quattro Automotive Project completion 1H FY25

The three-storey luxury car-retail centre remains on schedule for completion in Q2 FY25.



## John Hughes Forward Street Project completion 1H FY25

Foundations and site for the assembly of the super structure commenced Q1 FY25 and is on schedule for completion in Q2 FY25



## Exclusive Agreement for the licencing of MDSS IP in 2H FY25

Fielders (a division of BlueScope Steel) signed binding commercial terms following a successful 120-day due diligence term. These binding terms currently entail fixed supply costs and royalties for the use of MDSS. The exclusive agreement is now subject to the performance of the IP on the Quattro Automotive Project and John Hughes Forward Street Project in 1H FY25 - An outcome is anticipated



## Secured FY24 contracted works still to be delivered in FY25.

Underpinning PARKDs revenue growth in FY25.

## Increased pipeline of technical, design and consulting in FY25.

This involves the design and evaluating potential multi-storey car park and industrial structures, giving PARKD an expanding pipeline of ongoing advisory works and a construction project pipeline for 2H FY25 and FY26.

## Expanding PARKDs portfolio with new technologies for the construction industry in 2H FY25

Emphasizing PARKDs drive to innovate and change traditional methods of construction.

FASTER | CHEAPER | SUSTAINABLE | FLEXIBLE

# FY25 STRATEGY AND GROWTH

**Continued step-change in Revenue growth from FY24 to FY25**

Execute on a strong pipeline of contracted work.

Continued **prudent capital management.**

Further activations and validation of our IP through **licencing terms and future pipeline projects.**

Potential royalty earnings and partnership obligations for our IP and the MDSB.

Future domestic and International opportunities through licensing terms and other jurisdictional partnerships.



# COMPANY OVERVIEW

FASTER | CHEAPER | SUSTAINABLE | FLEXIBLE



# PARKD is a commercial & industrial construction technology company.

## We Provide:

- Specialised technical design and consulting services.
- Construction contracting services, and
- Supply PARKD's patented, prefabricated, lightweight construction solutions.

All for the development and construction of permanent and temporary modular carparks, commercial and industrial structures.

PARKD's globally patented concrete modular "PARKD Car Park System" provides a full-service turn-key solution for projects.

With only three primary elements (which are pre-fabricated off-site), the system offers up to:

- 50% reduced construction time, and
- 40% lighter structure than traditional methods.

Making the end-product more cost effective, importantly **environmentally responsible** ♻️.

The modular, light-weight design provides the end-user the ability to relocate, reuse or modify the structure, depending on demand: by + adding / – subtracting / △ reshaping levels.



## TECHNICAL DESIGN AND CONSULTING



## CONSTRUCTION CONTRACTING



## IP LICENCING

### PARKD's INTELLECTUAL PROPERTY:

- **Metal Deck Connection System** development in partnership with Fielders Steel Roofing (a division of Bluescope Steel Ltd).
- **Continuously Voided Beam System** adopted for ultra long span applications.

### PARKD's IP PROTECTIONS and IP Licencing Discussions:

- **MDS** has commenced patent protection [*patent pending*]
- Our **CVB™** patented registered in **13 countries** including: Australia, New Zealand, the United States, Canada, the European Union, South Africa and Japan.
- Exclusive agreement and binding commercial terms for the licencing of the MDS to Fielders – *under formal review*

FASTER | CHEAPER | SUSTAINABLE | FLEXIBLE

# TECHNICAL ADVISORY

## OVERVIEW

PARKD delivers specialised project management and lead consultant advisory services for the development of commercial and industrial built form projects.

Our advisory services deliver project outcomes with the support of key consultants in a fraction of the time traditional pathways require.

### Delivered Services (but not limited to):

- Feasibility Reports
- Delivery of Project Development Applications
- Delivery of Contract Documentation for Costing/Construction



Example of architectural renders on different projects

FASTER | CHEAPER | SUSTAINABLE | FLEXIBLE

# TECHNICAL ADVISORY

## ACTIVITIES - contracts delivered or underway with:

- Quattro Automotive,
- John Hughes Automotive Group,
- Southern Health Services WA,
- Hellenic Club Canberra,
- Woolworths Group Ltd,
- Sydney Airport Corporation,
- Perth Airport Authority,
- NSW Port Authority,
- St John Ambulance WA,
- Mineral Resources Ltd,
- City of Fremantle,
- City of Bendigo,
- Bethesda Private Hospital, and
- St John of God Hospital

## TENDERING & INDUSTRY PARTNERSHIPS

Strong relationship with Contractors Built and Watpac BESIX for the supply only System nationally. Supporting design and tendering opportunities.

## INDUSTRY SPECIALISTS

Through our direct link to construction activities and pre-engineered solutions using our System, PARKD provides prompt and accurate prediction of construction costs and program timeframes to our clients







# CONSTRUCTION

## CONSTRUCTION CONTRACTING AND PROJECT DIVISION

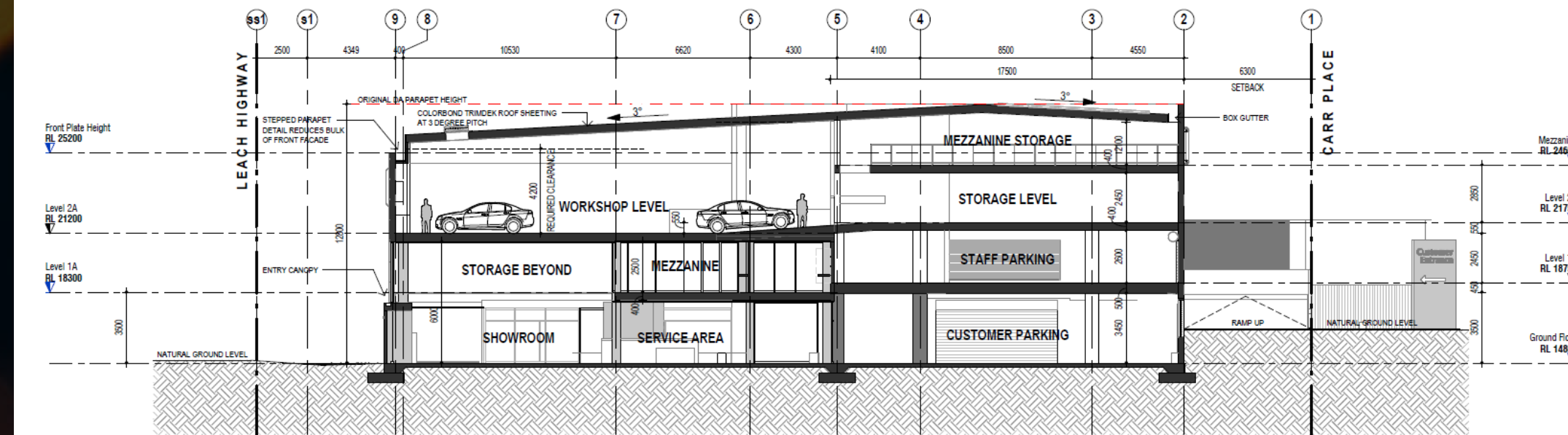
PARKD offers turnkey construction contracting services through our building company PARKD Construction Pty Ltd whilst also offering the general market the PARKD system in a “Kit-of-Parts” which can be delivered anywhere in Australia.

## DESIGN AND CONSTRUCTION – Post Technical Advisory

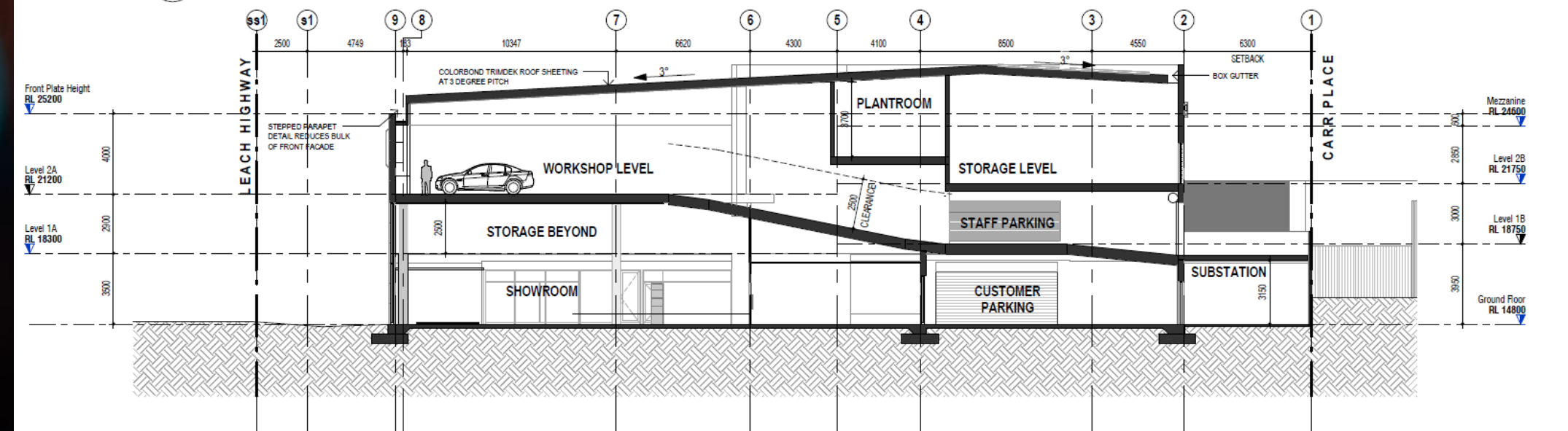
PARKD is uniquely positioned to negotiate contracts following delivery of Technical Advisory. Offering both our client and PARKD certainty in delivery outcomes - with regards to the **cost, delivery program and disruptions.**

## “KIT-OF-PARTS”

With development of the PARKD Metal Deck Connection System in partnership with Fielders decking solution Slimdek, PARKD is able to supply its solutions ready from our prefabrication facility for assembly Nationally and Internationally.



1 Diagrammatic Section AA  
1:200



2 Diagrammatic Section BB  
1:200

Audi Centre Myaree building section drawings

FASTER | CHEAPER | SUSTAINABLE | FLEXIBLE



# PROJECTS DIVISION

## QUATTRO AUTOMOTIVE PROJECT Audi Centre Myaree

- Turnkey Design and Construction Contract
- Un-propped construction method
- Project Value: \$9.5M
- Use: Commercial Retail
- Contract Stage: Stage 2 Construction Works
- Structure Type: Permanent
- System Assembly: 40 Crane days
- Concrete Pour: 3 days
- Fit-out: 20 weeks

**UNDER CONSTRUCTION - SCHEDULE COMPLETION IN Q2 FY25**



Audi Centre Myaree building renders



FASTER | CHEAPER | SUSTAINABLE | FLEXIBLE

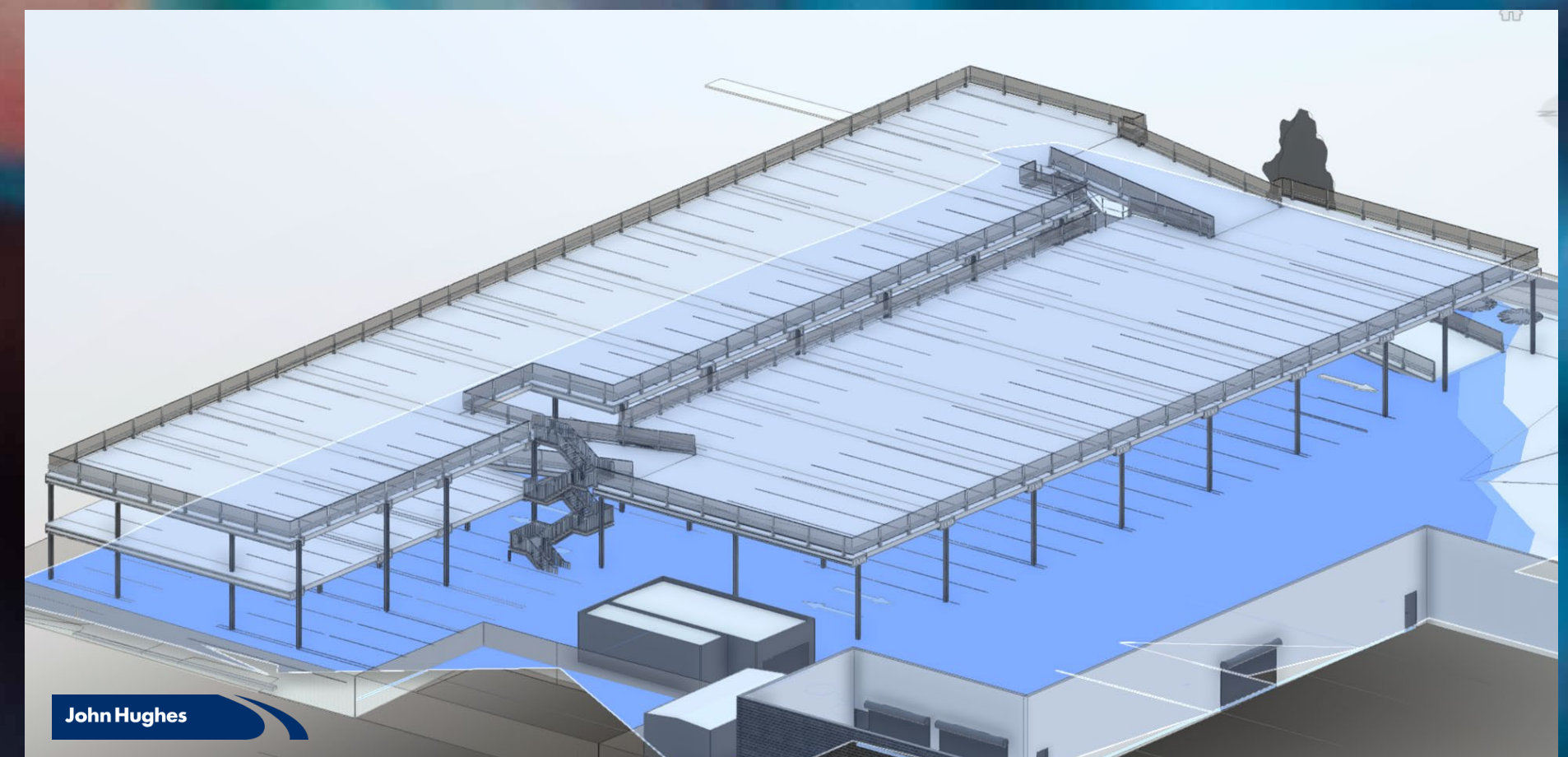
# PROJECTS DIVISION

## FORWARD STREET PROJECT

### John Hughes Automotive Group

- Turnkey Staged Design and Construction Contract
- Un-propped construction method
- Project Value: \$4.5M
- Gross vehicle storage: Approx. 300
- Construction Stage: Stage 1 Complete awaiting instruction to proceed with Stage 2 Construction Works
- Structure Type: Permanent
- System Assembly: 40 Crane days
- Concrete Pour: 3 days
- Fit-out: 6 weeks

**UNDER CONSTRUCTION - SCHEDULE COMPLETION IN Q2 FY25**



John Hughes Forward St building section drawings

FASTER | CHEAPER | SUSTAINABLE | FLEXIBLE

# IP LICENCING, RESEARCH & DEVELOPMENT

The IP owned and developed by PARKD offers the construction market an improved safe working methods, site productivity, sustainable outcomes and minimisation of waste and labour vs traditional construction methods.

Our recently developed Metal Deck Connection System, under which a Licencing Agreement with Fielders Steel Roofing (a division of BlueScope Steel Limited), has been identified by the industry as an **enabler to open new and existing markets for Profiled Steel Sheet Decking**.

## PATENT STATUS

CVB™ is patent registered in **13** countries including: Australia, New Zealand, the United States, Canada, the European Union, South Africa and Japan.

Our Metal Deck Connection System (MDS) has commenced the patent process for global markets

## MDSB TESTING COMPLETE

PARKD's Metal Deck Connection System has successfully passed testing at Curtin University (in WA) **exceeding Australian Standards and Codes for use in Australia and abroad**. The MDSB amplifies the benefits offered by Metal Deck solutions by converting site-based installation to Design for Manufacture (DFM) assemble on site

## IP LICENCING

The Profiled Steel Sheet Metal Deck represents a US\$ 5.0 Billion market internationally and is predicted to grow to US\$ 32.0 billion by 2032<sup>1</sup> due to the low embedded carbon outcomes when applied in construction. The non-binding term sheet under exclusive negotiation with Fielders (a division of Bluescope) seeks to significantly grow their market share in Australia and abroad.

**FASTER | CHEAPER | SUSTAINABLE | FLEXIBLE**



Curtin University testing arrangement



**Curtin University**

1. [https:// www.gminsights.com/industry-analysis/profiled-steel-sheet-decking-market](https://www.gminsights.com/industry-analysis/profiled-steel-sheet-decking-market)



# PARKD

## CONTACT US

**PETER MCUTCHEN – MANAGING DIRECTOR**

TEL | +61 431 020 429

EMAIL | [pmcutchen@parkdgroup.com](mailto:pmcutchen@parkdgroup.com)

### **PARKD LIMITED**

337 HARBOURNE STREET, OSBORNE PARK WA 6017  
PO BOX 166, CLAREMONT, WESTERN AUSTRALIA 6910  
(ASX CODE: PKD)

TEL | +61 (08) 9429 8863

EMAIL | [admin@parkdgroup.com](mailto:admin@parkdgroup.com)

WEBSITE | [www.parkdgroup.com](http://www.parkdgroup.com)

# APPENDIX

FASTER | CHEAPER | SUSTAINABLE | FLEXIBLE

# COMPLETED PROJECT

## RUSHTON STREET – JOHN HUGHES GROUP

### Turnkey Design and Construction Contract

- Construction inside existing warehouse
- Un-propped construction method
- Project Value A\$1.5 million
- Gross vehicle storage: Approx. 160
- Area: 1800m<sup>2</sup>
- Structure Type: Permanent
- System Assembly: 16 Crane days
- Concrete Pour: 1 day
- Fit-out: 6 weeks



FASTER | CHEAPER | SUSTAINABLE | FLEXIBLE

John Hughes Rushton St project photos



# INDUSTRY AWARDS



## PARKING AUSTRALIA - SUSTAINABLE CAR PARK DEVELOPMENT

National Award for Outstanding Sustainable Parking Development awarded to PARKD Ltd by the Australian Parking Australia. The project for John Hughes Motor Group was recognized as achieving the highest sustainable outcome for a parking development in Australia.

The judges were impressed with the low carbon content of the PARKD system, LEAN Construction Practice minimizing waste on site through prefabrication the rapid construction program helped by just-in-time deliveries and modular nature of the build.



## CONCRETE INSTITUTE OF AUSTRALIA - TECHNOLOGY & INNOVATION IN CONCRETE

PARKD LTD wins State Technology and Innovation Award in the Concrete Institute of Australia Awards for Excellence in Concrete for the design and construction of the John Hughes Project using the rapid permanent PARKD prefabricated structural system. The Project involved the rapid construction of an extensive suspended mezzanine structure for the storage of vehicles inside an existing warehouse using PARKD's patented Continuously Voids Beams

With a high percentage of prefabricated elements, the project was assembled in a matter of weeks reducing cost and risk to both our client and PARKD.

The awards recognise the significant contributions to excellence in concrete research, design, construction and materials in Australia and in particular this category includes significant contributions to the understanding or use of concrete as evidenced by research, technical publications, patent applications, new products or pieces of equipment, new techniques, design innovations, or educational activity.

